

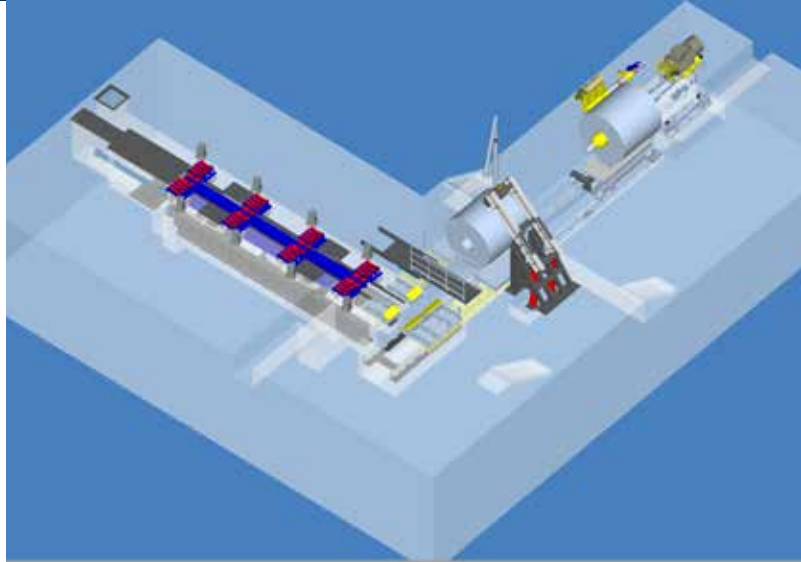


Company Profile



OIL & GAS

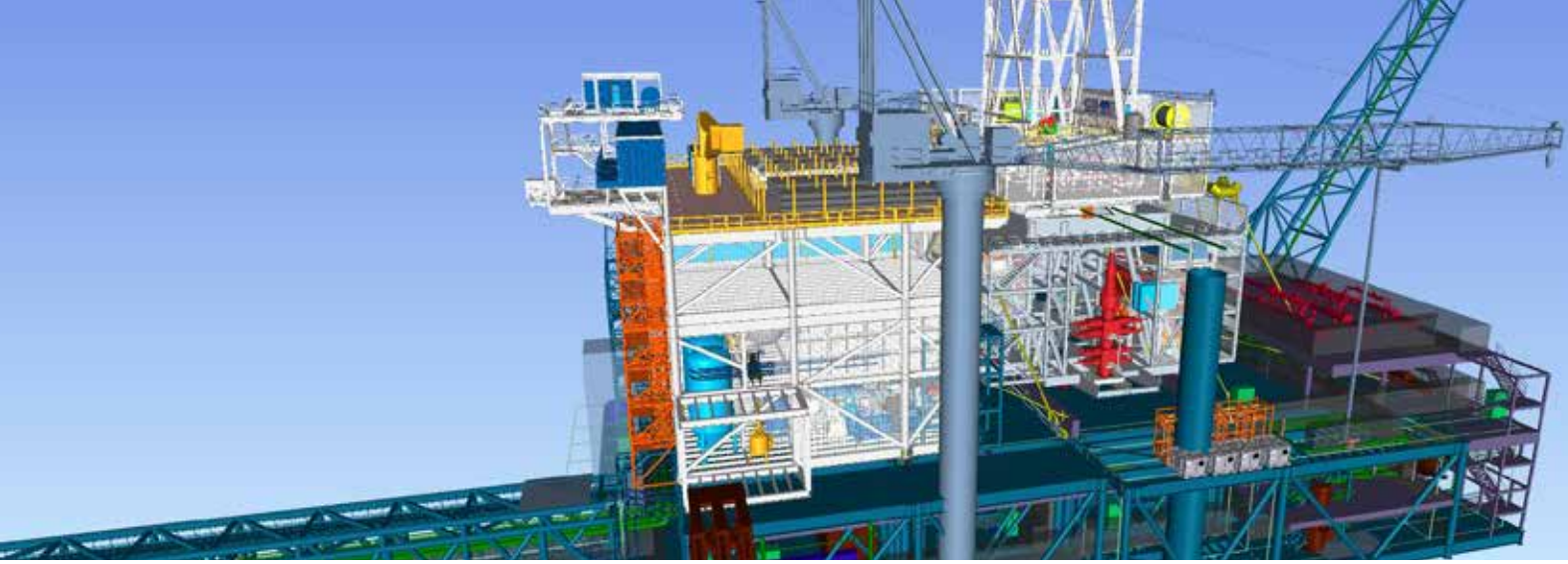
STEEL INDUSTRY



POWER

ENVIRONMENT

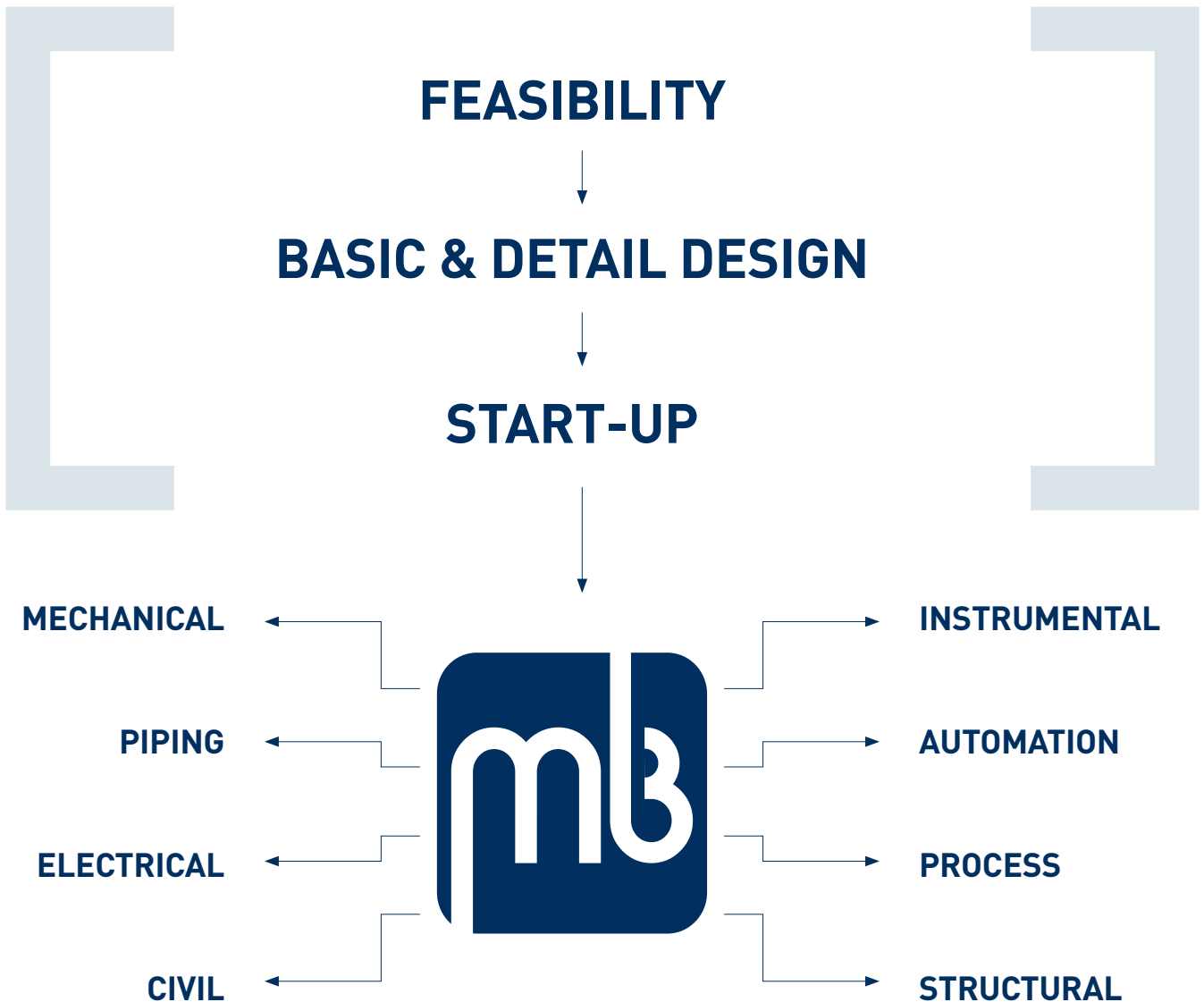


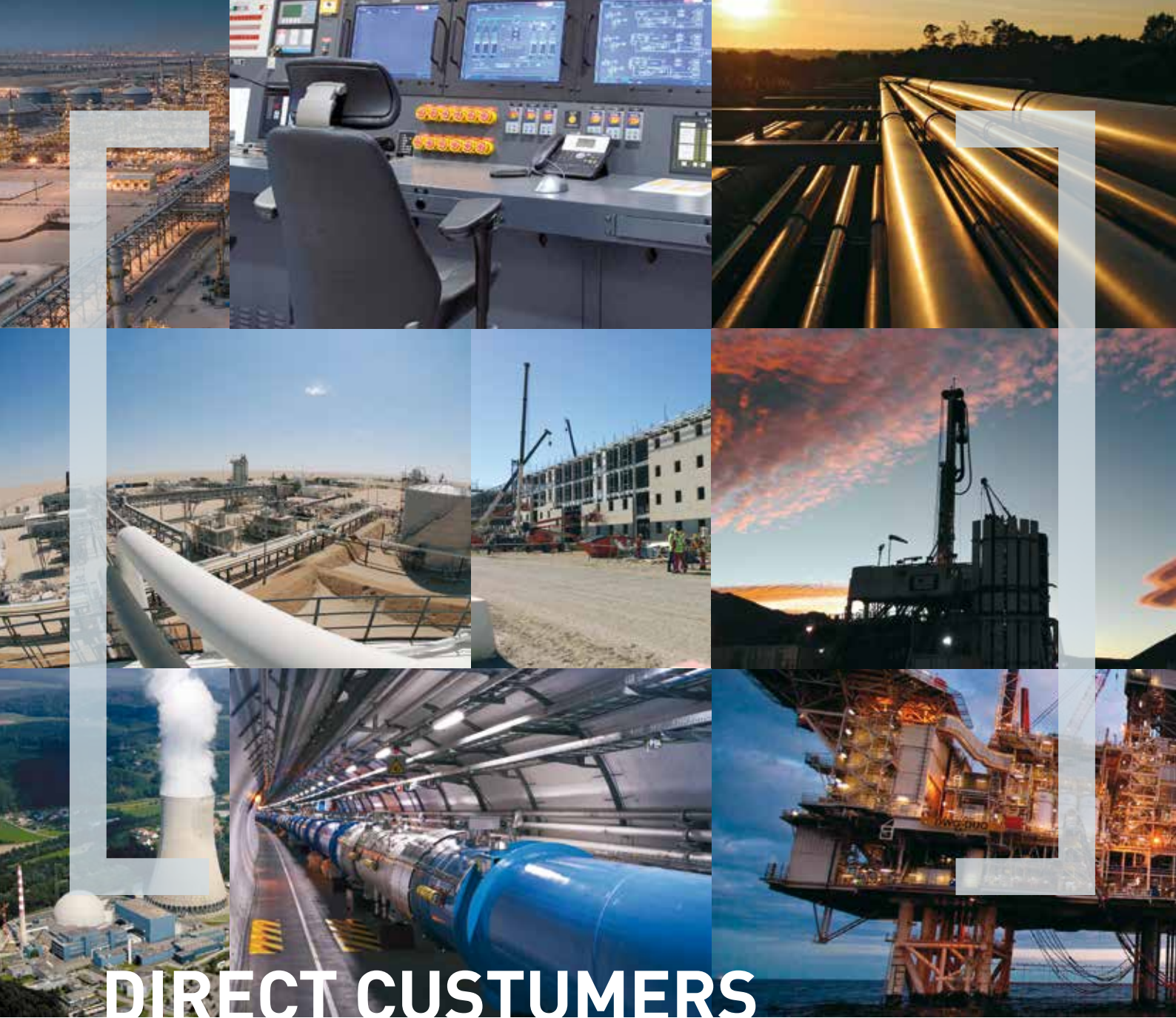


Studio Tecnico MB an internal engineering capacity of more than 80,000 hours per year and is therefore able to meet the needs of medium and large projects. Usually, **Studio Tecnico MB** operates through Task Forces of engineers, each of them dedicated to a specific project, identifying the responsibilities and duties of each person, as well as a person devoted to the internal team coordination. The use of the most modern hardware and software technologies

allow the company to provide, VPN and FTP access to each specific project which facilitates the sharing of data and information from multiple locations of the project.

The operational structure of **Studio Tecnico MB** is composed of professionals with a strong experience in complex industrial projects and that are very familiar with the international technical Standards and Specifications.





DIRECT CUSTOMERS





MECHANICAL & PIPING

Pipe Spools

Layout

1.920
MONTHLY HOURS

Design

21.120
ANNUAL HOURS

WTP

Interconnecting



CIVIL & STRUCTURAL

Calculations

Surveys

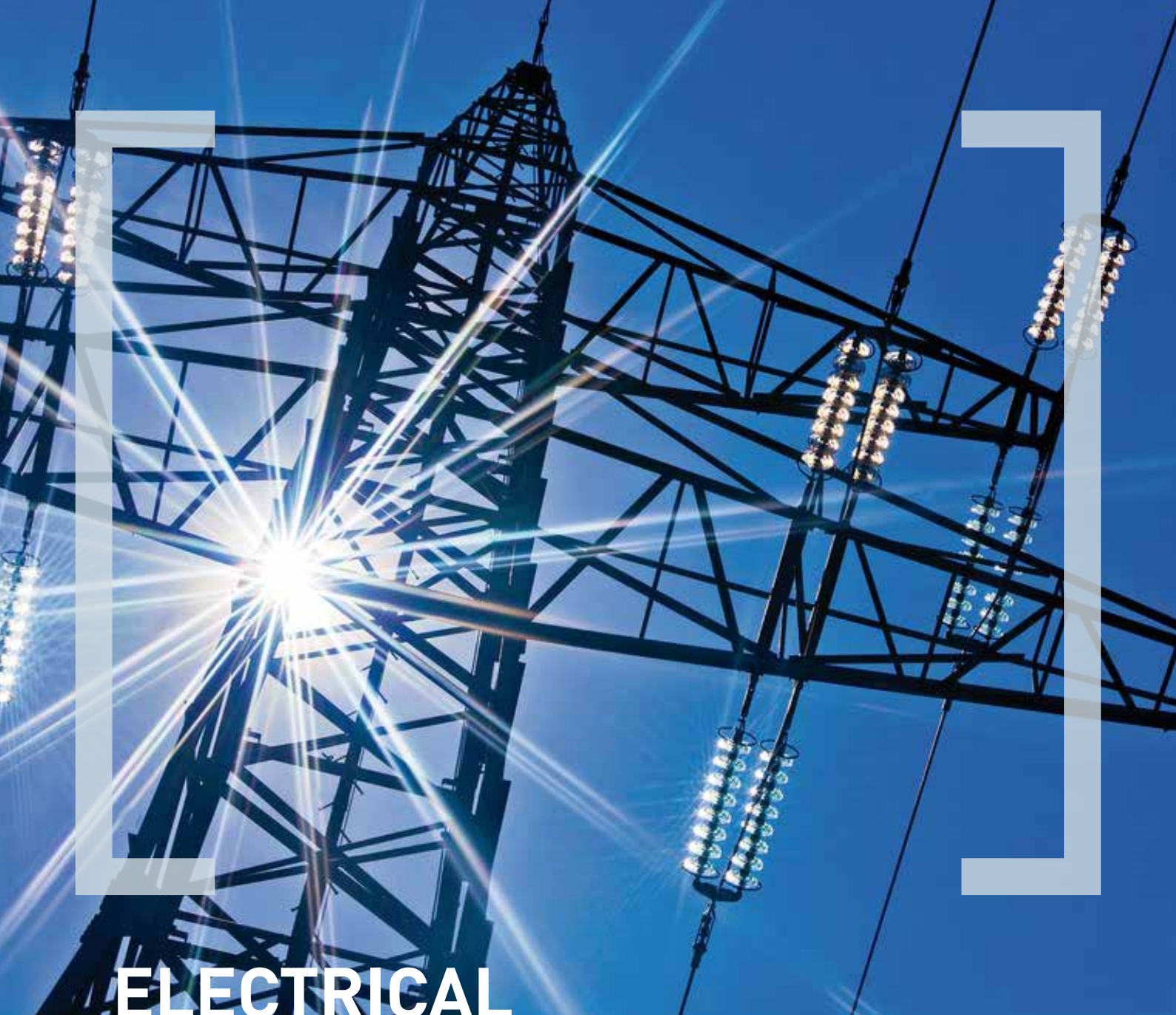
1.440
MONTHLY HOURS

HVAC

15.840
ANNUAL HOURS

Foundations

Buildings



ELECTRICAL

Cabinets

LER

2.560
MONTHLY HOURS

Substations

28.160
ANNUAL HOURS

Full project design

Cables



INSTRUMENTAL & AUTOMATION

Control Instruments

Industry
4.0

1.120
MONTHLY HOURS

12.320
ANNUAL HOURS

HMI

Level 1&2



MAIN TOOLS / SOFTWARE

- **HYSYS** (Process simulators)
- **GRATEC ADVANCE STEEL** (3D plant modeling)
- **ESAPRO** (3D piping)
- **INVENTOR** (3D mechanical)
- **AVEVA PDMS** (3D plant modeling)
- **TEKLA** (3D plant modeling)
- **CAESAR II** (Stress analysis)
- **AMPERE** (Integrated design optimization & simulation for power systems)
- **PRYSMIAN JDC** (Electrical Cable Sizing)
- **DIALUX** (Lighting Calculation)
- **ZEUS** (lightning protection system design)
- **INSTRUCALC** (PSV & Control valves sizing)
- **MS Project** (Planning)
- **AutoCAD** (2D - 3D design)
- **NX** (2D - 3D design)
- **SOLID EDGE** (2D - 3D design)
- **PROSAP** (Professional structural analysis program)
- **PROSAP** (Structural engineering software)
- **Pipe Plus** (Piping design and analysis software for productivity)
- **STAAD** (Professional structural analysis program)
- **SPAC** (Automation software)
- **SABIK** (Electrical and pneumatic design)
- **NAVIS WORK** (Clash Analysis)



AROUND THE WORLD





Via Trieste n° 227 · 48122 Ravenna · Italy

Phone +39 0544 278424

Phone & Fax +39 0544 407291

info@studiotecnicomb.it